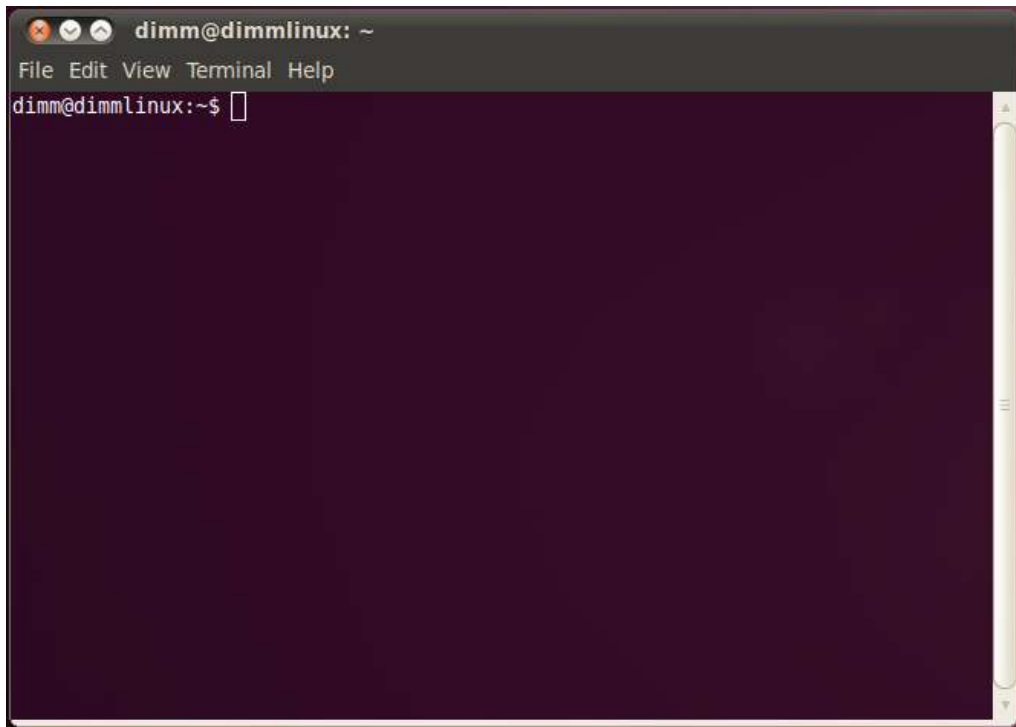


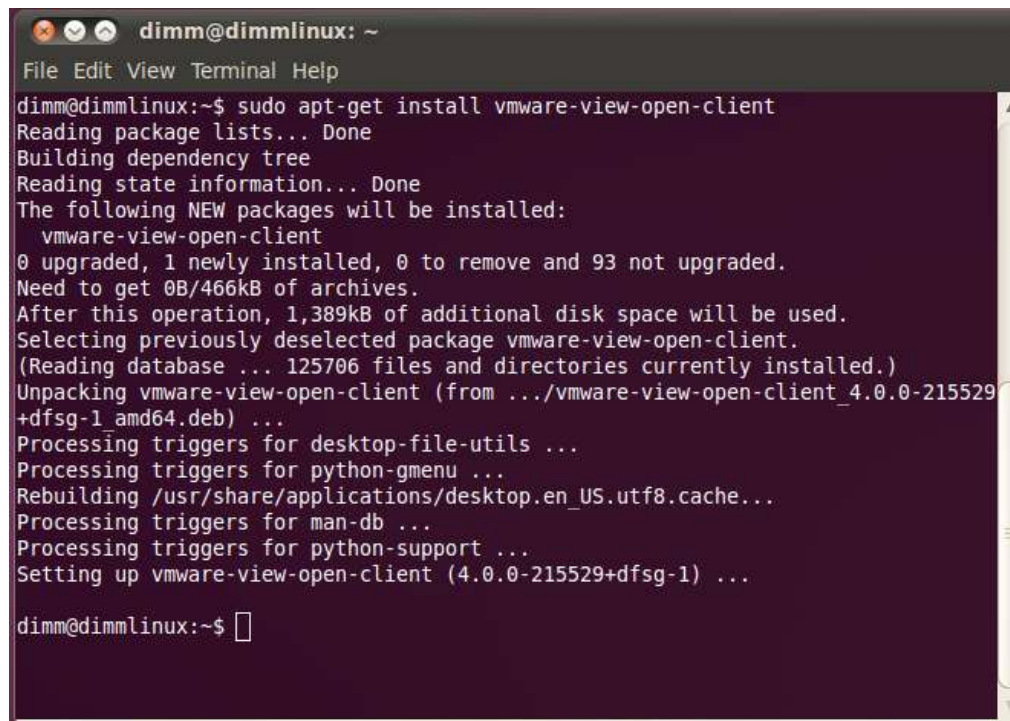
Steps for setting up VMWare View on Ubuntu Linux

1. Begin by opening a Terminal window. You can do this by clicking on the Applications menu, then opening up Accessories and clicking on Terminal.

A terminal window titled "dimm@dimmlinux: ~" with a menu bar containing "File Edit View Terminal Help". The prompt "dimm@dimmlinux:~\$" is visible with a cursor, and the rest of the terminal is empty.

```
dimm@dimmlinux: ~
File Edit View Terminal Help
dimm@dimmlinux:~$
```

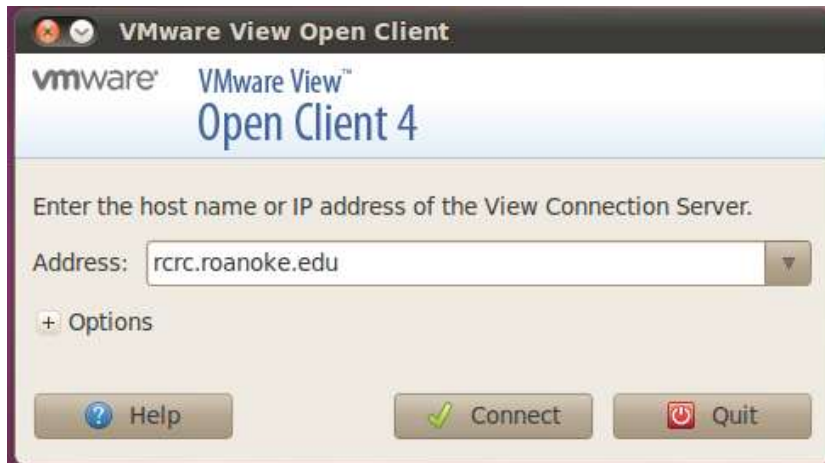
2. Type the command “sudo apt-get install vmware-view-open-client” without the quotes. The computer will ask you for your password. Enter it and the install will continue. You will have to hit “y” to verify the install.

A terminal window titled "dimm@dimmlinux: ~" with a menu bar containing "File Edit View Terminal Help". The terminal shows the execution of the command "sudo apt-get install vmware-view-open-client" and its output, including package lists, dependency tree, and installation progress.

```
dimm@dimmlinux: ~
File Edit View Terminal Help
dimm@dimmlinux:~$ sudo apt-get install vmware-view-open-client
Reading package lists... Done
Building dependency tree
Reading state information... Done
The following NEW packages will be installed:
  vmware-view-open-client
0 upgraded, 1 newly installed, 0 to remove and 93 not upgraded.
Need to get 0B/466kB of archives.
After this operation, 1,389kB of additional disk space will be used.
Selecting previously deselected package vmware-view-open-client.
(Reading database ... 125706 files and directories currently installed.)
Unpacking vmware-view-open-client (from .../vmware-view-open-client_4.0.0-215529+dfsg-1_amd64.deb) ...
Processing triggers for desktop-file-utils ...
Processing triggers for python-gmenu ...
Rebuilding /usr/share/applications/desktop.en_US.utf8.cache...
Processing triggers for man-db ...
Processing triggers for python-support ...
Setting up vmware-view-open-client (4.0.0-215529+dfsg-1) ...

dimm@dimmlinux:~$
```

3. You can now open the VMWare View client from the Applications menu, and opening Internet, and clicking on VMWare View Open Client. You will get a window as shown below. Enter “rsrc.roanoke.edu” in the Address box, without quotes as shown below.



4. For username, enter your Roanoke College username. Enter your Roanoke College password in the password field. Make sure the Domain drop down says ACADEMIC as shown below. Click log in when you are finished.



5. Click on the Lab machine you wish to access and the client will connect automatically.

